

Installation instructions for Body Double 23

1/ Option 1: Video Projection

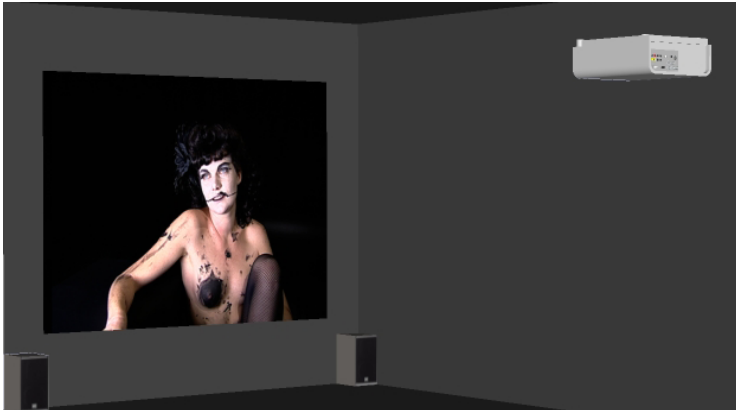


IMAGE: Ratio 4/3 Dimensions: base is minimum 300 cm (10 feet)

PROJECTOR: LCD placed upside down and centered on top of the image with Keystone at minimum, projection distance to be determined regarding the video projector

BEST CONDITIONS: Shortest distance and zoom at minimum

CHOOSING A PROJECTOR:

If the room is dark enough, priority should be given to the contrast ratio (50 000:1 ideal)
If not, the brightness is to most important (+/- 3500 lumen)

SOUND: Depending on the space configuration, the speakers are situated on each side of the screen and oriented towards the centre of the space. Adjust the sound level accordingly before the screening, considering that any other piece may interfere with the sound of the film.

WALLS: painted black or dark grey

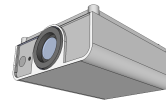
Instructions for painting a white screen on the wall:

- Set the image size and level the image
- Mark the 4 corners on the last lit pixel row of the projection
- Join the marks to obtain the frame
- Put some tape inside the frame (lit pixel area)
- Paint grey or black around the screen area

FLOOR: Cover the floor with dark grey rugg considering that this will improve the quality of the sound in the projection room.

If the space should look different, please contact Air de Paris.

LCD Video Projector



componant video

Amplifier + Speakers



double RCA male to double RCA male

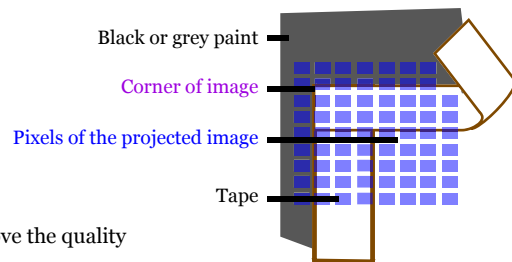
DVD player



componant output



maximum distance 100 cm (3.5 feet)



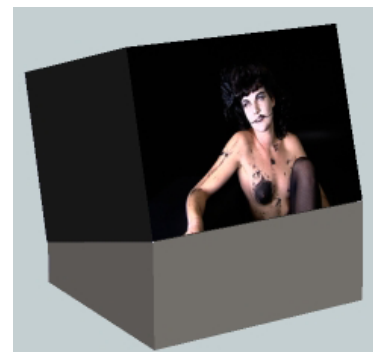
2/ Option 2: CRT monitor

DVD player connected with composite cable to a CRT monitor 19 inches minimum (like Hantarex or Sony Trinitron) 4/3 aspect ratio placed on a low base directly on the floor. The base has same dimensions as the monitor with 15° approximately tilted top.

The base is painted according to the color of the monitor.

For the sound :

- Use the speakers of the monitor
- or
- Connect the audio output of the DVD player to pre-amplified speakers to be placed on the floor behind the base on each side
- or
- Use headphones (to be connected to the DVD player)



3/ Settings Adjustment:

Check the full compatibility of your equipment with the media provided (DVD-R).

Adjust the contrast and luminosity of the image, starting from factory settings (initialize and start from scratch).

If the image looks dark, it might be necessary to replace the bulb of the projector or change the monitor.